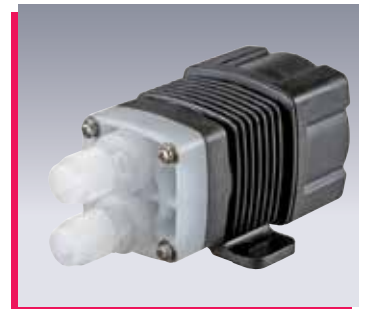
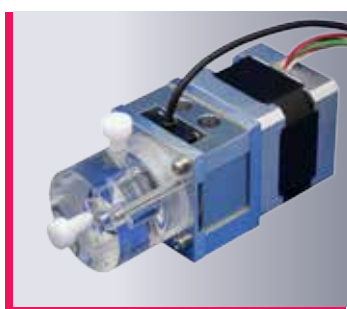


OEM Pump Capabilities



IWAKI is a world wide leading pump manufacturer. Our high quality, compact products, such as air, magnetic drive and metering pumps, are widely used in medical, laboratory and environmental control systems.



High Quality pumps, compact and simple to use

Compact pumps offer long life and easy integration in OEM equipment.

Magnetic drive pumps

MD SERIES



- Flow rates up to 36 GPM and head to 67 FT
- Magnetic drive sealless design
- Quality construction for high efficiency and low hydraulic noise
- Variety of pump/motor configurations and materials-Polypropylene, ETFE, PVDF
- AC standard / DC per request (Brush and brushless)
- OEM systems including chiller and filtration

Max. discharge capacity	36 GPM (135 l/min)
Max. discharge head	47 FT (14.3)/67 FT (20.3 m)
Power voltage	100, 115, 230 VAC
Wet ends	GFRPP or PVDF or ETFE

Magnetic drive pumps

MX SERIES



- Flow rates up to 130 GPM
- Heads up to 126 FT
- Patented split volute casing
- Improved efficiency and performance
- AC or DC motor options
- OEM systems including filtration, reclamation, and circulation

Max. discharge capacity	130 GPM (492 l/min)
Max. discharge head	126 FT (38 m)
Power voltage	115, 230 VAC
Main materials	GFRPP, CFRETFE

Direct drive pumps

NRD/RD SERIES, DDC SERIES



- Flow rates up to 18.5 GPM
- Heads up to 49 FT
- 24V Brushless DC (12VDC option available)
- Compact, sealless canned motor design
- Long life in excess of 25K hours
- Low noise (as low as 40 dB)
- Only one moving part (impeller/rotor)
- Fuel cells, chillers / heaters / laser cooling

Max. discharge capacity	18.5 GPM (70 l/min)
Max. discharge head	49 FT (15 m)
Power voltage	NRD: 24 VDC DDC: 12 VDC
Main materials	PPS, GFRPP, FKM, 316TI SS, EPDM, Ceramic

Gas-Liquid transfer pumps

APN-W SERIES



- Flow rates up to 600 ml/min (liquid)
- Flow rates up to 1200 ml/min (Air/gas)
- Pressures up to 11.6 PSI
- Vacuum up to 14 - 26 in Hg
- Long life diaphragms
- Compact DC motor driven designs
- Maintenance-free design
- Superior self-priming
- Designed for medical and chemical / laboratory analyzer equipment

Max. air discharge capacity	2.4 l/min
Max. air discharge pressure	11.6 PSI (0.08 MPa)
Max. discharge capacity	1.0 l/min
Power voltage	24 VDC
Main materials	GFRPP,FKM,EPDM

Diaphragm air pumps

APN 12/24 VDC



- Flow rates up to 110 LPM (Air/gas)
- Pressures up to 29 PSI
- Vacuum up to 30 in Hg
- Long life diaphragms
- Maintenance-free design
- AC or DC motor options
- Specializing in custom configurations
- Can be used as a compressor or vacuum pump
- Designed for medical and chemical / laboratory analyzer equipment

Max. air discharge capacity	29 GPM (110 l/min)
Max. air discharge pressure	29 PSI (0.2 MPa)
Power voltage	24 VDC
Main materials	GFRPP, PTFE, EPDM, FKM

Magnetic drive gear pumps

MDG-R2 24 VDC



- Flow rates up to 1.8 l/min
- Pressures up to 43.5 PSI
- AC and DC motor options
- Compact sealless design
- Liquid temperature capability up to 203°F
- Brushless DC motor with built-in driver

Max. discharge capacity	1.8 l/min
Max. discharge pressure	43.5 PSI (0.3 MPa)
Power voltage	24 VDC
Main materials	SUS, PPS

Wide range of pump technologies at your service

Hicera pumps

V-05 24 VDC



- Flow rates up to 1682 ml/min
- Pressures up to 100 PSI
- AC or DC motor options
- Temperature range of 32 - 250°F
- Body material is SUS 304/316.
- Valveless plunger pump capable of handling slurries & high viscous fluids
- Designed for medical & food handling equipment as well as injection of ultra pure water

Max. discharge capacity	1682 ml/min
Max. discharge pressure	100 PSI (0.69 MPa)
Power voltage	24 VDC
Main materials	SUS, PVDF, Al ₂ O ₃ , ZrO ₂

High resolution pulse pumps

HRP SERIES



- High stroke rate up to 720 spm
- Ultra-Compact design (4" x 2" x 3.5")
- Available in 12 or 24VDC for increased portability
- Vertical or horizontal porting configurations
- Highly efficient diaphragm pump
- External control functions
Pulse control, 4-20mA control, 1-5V control, Stop control

Max. discharge capacity	38 ml/min
Max. discharge pressure	29 PSI (0.2 MPa)
Power voltage	12/24 VDC
Main materials	PVDF, FKM, Al ₂ O ₃

Syringe-type stepping pumps

Exmire SPV, SPX SERIES



- High Accuracy: ±0.3%
- Repeatability: 0.03%
- High Resolution: 6000 steps/stroke
- 4 Pump Sizes per model 100µl, 250µl, 500µl, 1000µl
- Applications: Dispensing & Aspiration, In-Vitro & Biochemical Analyzers

Dispense range	0.01667 µl/pulse to 1,000 µl/stroke
Max. discharge pressure	72 PSI
Power voltage	24 VDC Stepper Motor Driven
Port Connections	¼-28 UNF
Main materials	Peek, Borosilicate Glass, Acrylic, PE

Magnetic drive turbine pumps

MDT SERIES



- Flow rates up to 5.3 GPM
- Temperatures up to 203°F
- Heads up to 51 PSI
- Magnetically driven turbine pump with no shaft seals
- Applications where low flow/high head is required
- Vacuum capability of up to 8 kPa
- Liquid end parts are all non-metallic

Max. discharge capacity	5.3 GPM (20 l/min)
Max. discharge head	51 PSI (0.35 MPa)
Power voltage	115, 230 VAC
Main materials	PPS, PEEK, Ceramic & Carbon

Electromagnetic metering pumps

EZ SERIES



- High stroke rate up to 360 spm
- Double ball check valves
- Long lasting diaphragm
- Small, lightweight and quiet design
- High Compression ratio ensures proper feed
- EZ-Timer module is a simple and effective way to automate additions in small systems

Max. discharge capacity	400 ml/min
Max. discharge pressure	1.0 MPa
Power voltage	115, 230 VAC
Main materials	PVC, FKM, Al ₂ O ₃

Bellows pumps

KBR SERIES



- Flow rates up to 2550 ml/min
- Pressures up to 5.8 PSI
- Driven by electric gear motor
- Bellows are in Polypropylene
- Compact and extremely reliable
- Simple design, Low maintenance
- Simplex, duplex or multiplex design

Max. discharge capacity	2550 ml/min
Max. discharge pressure	5.8 PSI (0.04 MPa)
Power voltage	24 VDC
Main materials	PP, EPDM

Engineered for high performance liquid transfer



Air-Operated Double Diaphragm Pumps

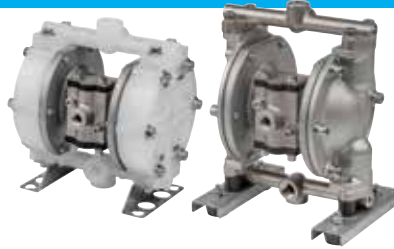
1/4" TC-X 030/050 SERIES



- Compact design
- Flow rates up to 3 GPM
- Heads up to 230 FT
- Looped C™ Air Motor technology (patent pending)

Max. discharge capacity	3 GPM (11.5 l/min)
Max. discharge head	230 FT (70 m)
Material options	SS, Aluminum, PVDF, GFRPP, Pure Polypropylene

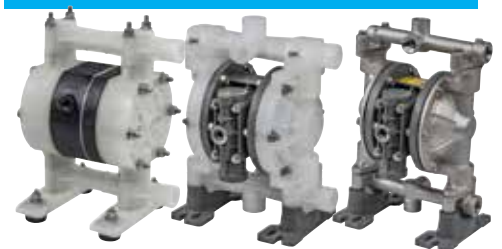
3/8" TC-X 100 SERIES



- Flow rates up to 6.3 GPM
- Heads up to 230 FT

Max. discharge capacity	6.3 GPM (24 l/min)
Max. discharge head	230 FT (70 m)
Material options	SS, Aluminum, GFRPP, Pure Polypropylene

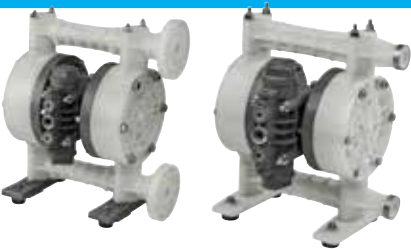
1/2" TC-X 150 SERIES



- Flow rates up to 15.8 GPM
- Heads up to 230 FT
- Looped C™ Air Motor technology (patent pending)

Max. discharge capacity	15.8 GPM (60 l/min)
Max. discharge head	230 FT (70 m)
Material options	SS, Aluminum, PVDF, GFRPP, Pure Polypropylene, Acetal

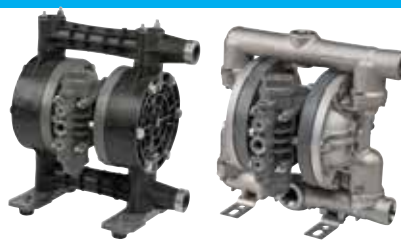
3/4" TC-X 202 SERIES



- Flow rates up to 31.7 GPM
- Heads up to 230 FT
- Looped C™ Air Motor technology (patent pending)

Max. discharge capacity	31.7 GPM (120 l/min)
Max. discharge head	230 FT (70 m)
Material options	PVDF, GFRPP

1" TC-X 252/253 SERIES



- Flow rates up to 58.1 GPM
- Heads up to 230 FT
- Looped C™ Air Motor technology (patent pending)

Max. discharge capacity	58.1 GPM (220 l/min)
Max. discharge head	230 FT (70 m)
Material options	SS, Aluminum, Cast Iron, PVDF, GFRPP



Applications

- Wastewater Treatment Skids
- Ink Dispensing Systems
- Pavement Marking Trucks
- Commercial Laundry Systems
- Chemical Dosing Skids
- Concrete Additive Injection
- Car Wash Systems
- Paint Colorant Dispensing
- Filtration Skids
- Rental Equipment Trailers
- DEF Dispensing

Our organization's commitment to quality is integral with our mission statement reinforcing the importance of providing superior products and just as important, superior customer service. Iwaki quality is not just in the physical product, but in every aspect of our business.



Thorough quality-control measures and constant pursuit of efficiency have helped Iwaki establish a superior production system.



IALT-00013.L April 2016

www.IwakiCustomPumps.com